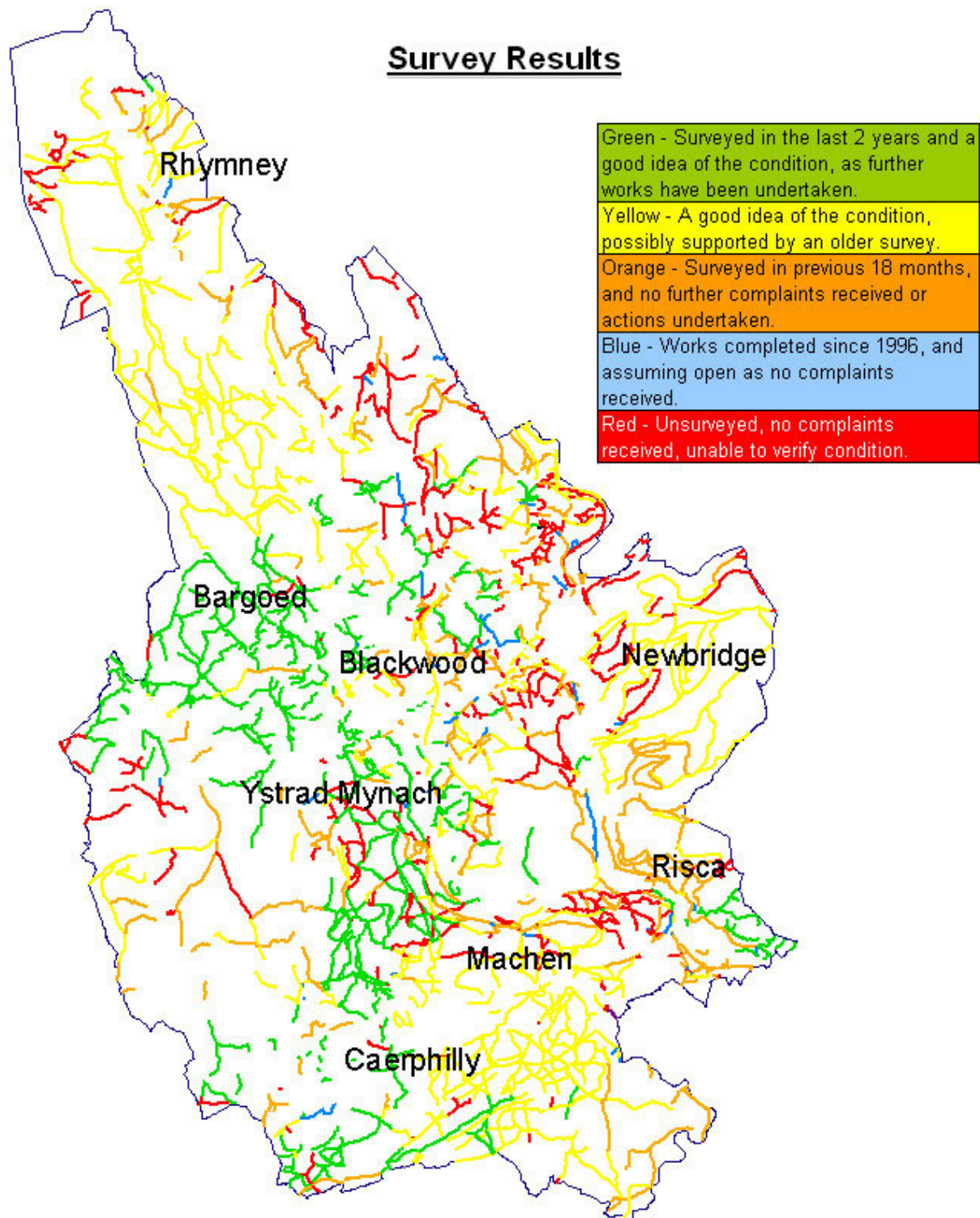


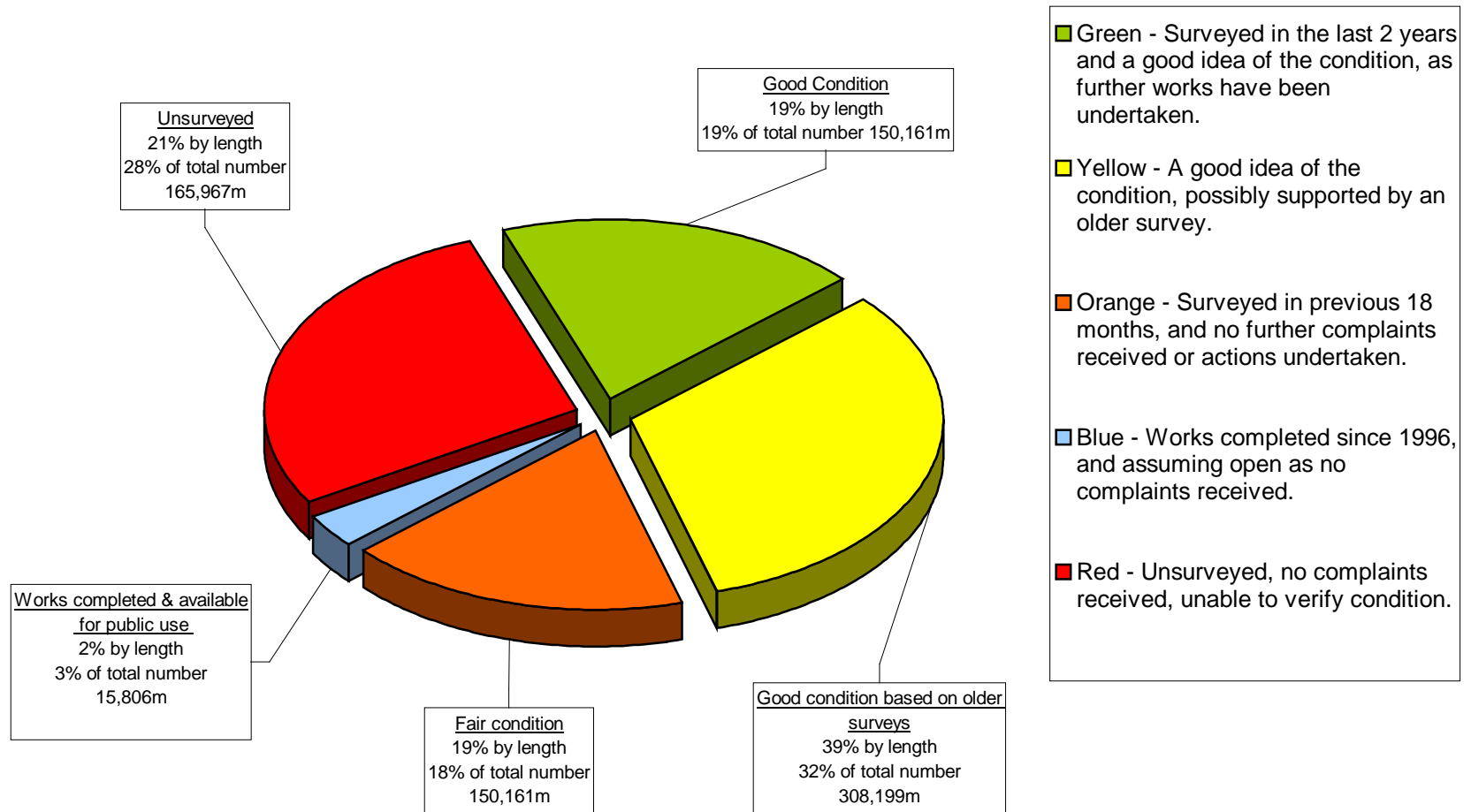
## APPENDIX I

### Survey Results



## Appendix II

### Breakdown of Rights of Way



## Appendix III

### Analysis of Survey Results (1)

Question; Why are you interested in rights of way (Due to the variety of responses, and multiple use some have been collected together for ease of reporting).

Interest	%
Has an interest in Rights of Way as a walker	65.47
Has an interest in Rights of Way as a cyclist	13.17
Has an interest in Rights of Way as a horse rider	17.77
Has an interest in Rights of Way as a landowner	3.58
TOTAL	99.99

Q How frequently do you use rights of way?

	%
Several times a day	4.30
Daily	18.10
Two or three times a week	38.10
Weekly	18.10
More than once a month	13.20
Less frequently	8.80
TOTAL	100.0

Q What are the best things about the rights of way network?

	%
Could not identify any particular likes	5.00
Well signposted waymarked network	2.40
Access for Safety, Health and exercise	88.50
No comment	4.10
TOTAL	100.00

Q Which town or village or settlement do you live in?

Habitat	No
Aberbargoed	1
Abercanaid	1
Abercarn	2
Abertillery	2
Bargoed	10
Barry	1
Bassaleg	1
Beddau	1
Bedwas	3
Blackwood	16
Bridgend	1
Bristol	1
Brithdir	1

Caerphilly	23
Cardiff	33
Cefn Hengoed	1
Coychurch	1
Croespenmaen	1
Crosskeys	2
Crumlin	2
Cwm Argoed	1
Cwmavon	3
Cwmfelinfach	1
Deri	4
Fairview	1
Fleur-de-lys	1
Fochriw	1
Gelligaer	1
Gilfach	1
Gilwern	1
Hengoed	5
Lisvane	2
Llanilleth	1
Llantrisant	1
Llantwit Fardre	1
Machen	7
Maescymmer	2
Malpas	1
Manmoel	2
Merthyr	4
Miskin	1
Nantgarw	1
Nelson	8
Newbridge	1
Newport	2
Oakdale	8
Pengam	2
Penllyn	1
Penpedairheol	1
Pentwynmawr	1
Penybryn	1
Pontllanfraith	7
Pontlloftyn	1
Pontypool	1
Pontypridd	1
Pontywaun	2
Quakers Yard	1
RCT	4
Risca	6
Rogerstone	1
Rudry	2
Swansea	1
Talbot Green	2

Tonyrefail	1
Tredegar	1
Treharris	1
Trelewis	1
Treorchy	1
Treowen	1
Trethomas	1
Waterloo	2
Wattsville	2
Woodfieldside	1
Ystrad Mynach	2
Public from within the County	138
Public outside County	73
TOTAL	211
% of Public from within the County	65.4
% of Public from outside the County	34.5

Q Can we contact you to tell you how you can help as a volunteer?

	%
Yes	32.40
No	58.20
No Reply	4.80
Undecided	4.60
TOTAL	100.00

Q Problems with paths. Many respondents had one or more problems while using the network

	No.	%
Poor way marking	120	53
Route not on map	70	31
Poor information	100	44
Do not understand rights associated with FP, BR and Byway	84	37
There are too many stiles and barriers	51	22
Poor disabled facilities	82	36
Stiles and gates in poor condition	83	36
Routes blocked or overgrown	148	65
Gaps in network	83	36
Poor access to open land	60	26
Misuse by others	137	60
Other	3	1

Respondent	Number	Percentage (%)
Resident of Caerphilly	138	65.4
Visitor to the Area	73	34.6
Total	211	100

## APPENDIX IV

### Analysis of Survey Results (2)

Q List the three things that need improving

1 <sup>st</sup> Priority	No.
Misuse	23
Obstruction due to overgrowth	21
Signing	18
No reply	17
Publication of routes	17
Waymarking	16
Clear path due to obstruction	15
Disabled Access	11
More bridleways	11
Access	9
Publication by any means	8
Condition of Structures	5
Publicity (Leaflets, internet)	4
Code of conduct	4
Dog bins	4
Dumping	3
Condition	3
Safety	3
Network routes	2
Circular walks	2
To many structures	2
Litter	1
Map reading	1
Land grabbing	1
Health	1
Flog the vandals	1
Refreshments	1
Signing and waymarking	1
Signing and publication	1
Signing and misuse	1
Clearance overgrowth	1
More bridleways and circular routes	1
More bridleways and publication	1
Misuse and dumping	1

2 <sup>nd</sup> Priority	No
No reply	41
Obstruction due to overgrowth	22
Misuse	19
Publication of routes	18
Waymarking	14
Clear path due to obstruction	13
Adopt paths	12

Condition of structures	11
Condition	8
Disabled access	8
More publicity	7
Circular walks	5
Publicity (Leaflets, internet)	4
Litter	4
Code of conduct	4
To many structures	3
Access	2
Dog bins	2
Poor condition for mums	2
Access	2
Dumping – fly tipping	2
Map reading	1
Network of routes	1
Safety	1
Flog vandals	1
Refreshments	1
Signing/waymarking	1
Clearance	1
Disability bridleways	1
More circular routes	1
Bridleway clearance	1

3 <sup>rd</sup> Priority	No
No reply	74
Publication of routes	13
Misuse	11
Waymarking	11
Clear path due to obstruction	9
Signing	8
Condition of structures	8
Obstruction due to overgrowth	7
Publicity (Leaflets internet)	7
Disabled access	6
Network of routes	6
Code of conduct	5
Publicity	5
Access	5
Circular walks	5
Condition	5
Clearance	4
Safety	3
Circular routes bridleways	3
More bridleways	2
Litter	2
Motor cycle facilities	2
To many structures	2
Dog bins	2
Signing waymarking	2

Health	1
Dumping	1
Refreshments	1
Misuse Motorcycles	1



## APPENDIX V

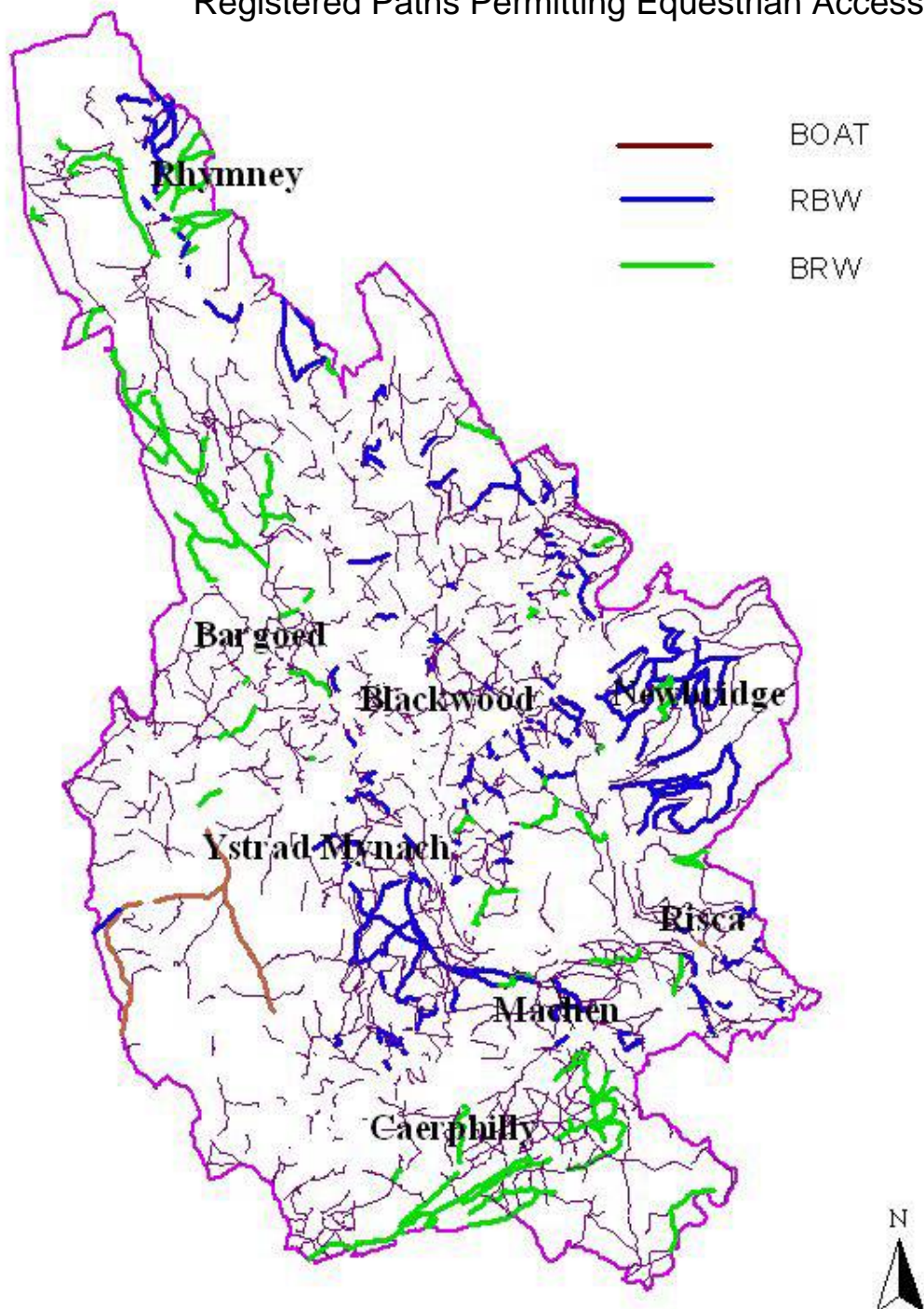
### Reasons why Public Do Not use Public Rights of Way

Improvement	Total %
Routes are overgrown	65
Routes are blocked	65
Misuse of paths	60
Lack of waymarking	53
Route information is difficult to use	44
Stiles/gates in poor condition	36
Lack of information about routes	36
Many rights of way are not recorded	31
Too many stiles/barriers	22
Path Surface needs improving	1

The results have been compiled to show the multiple points raised by participants and not as an overall % of those taking part

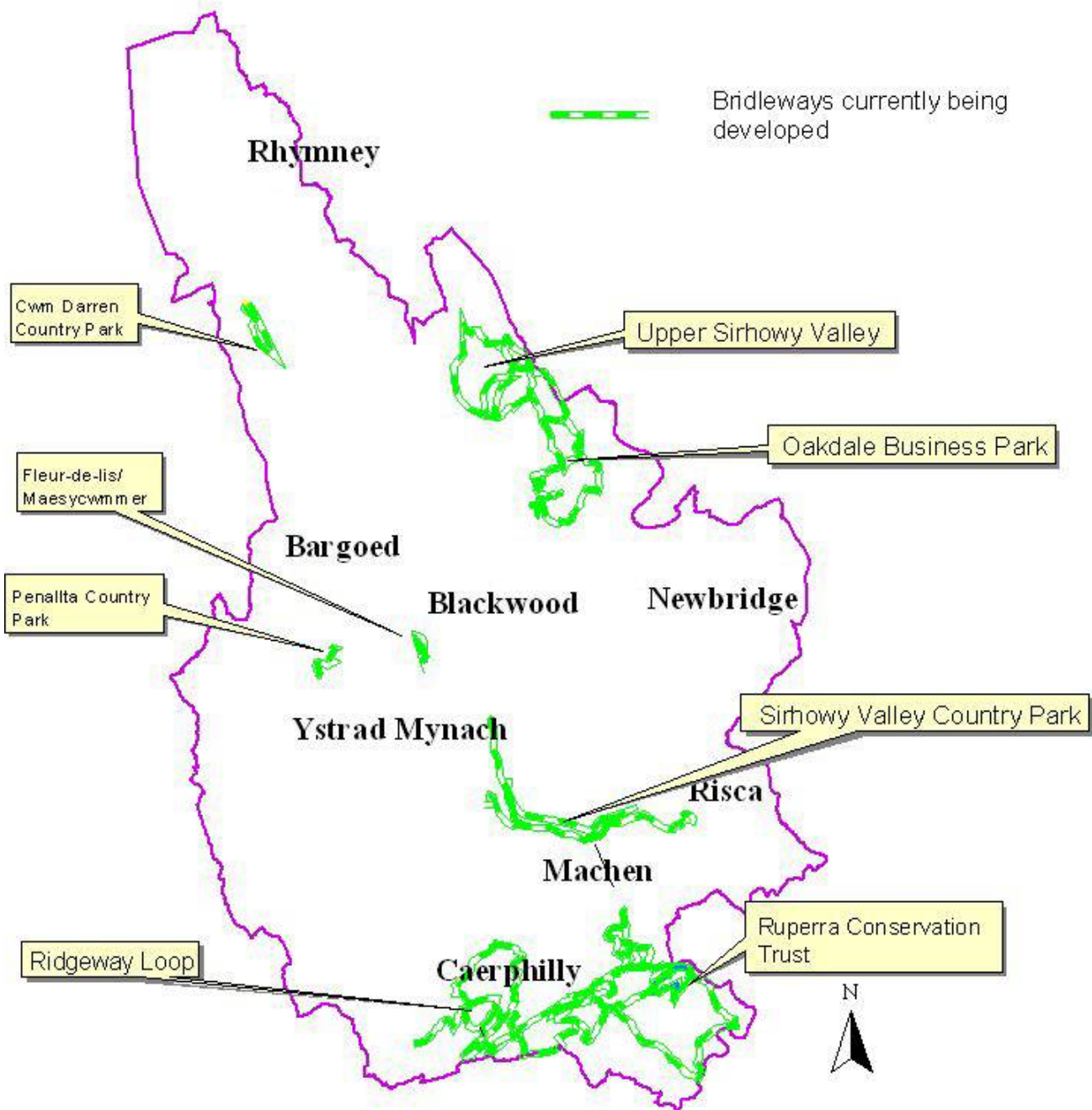
## Appendix VI

### Registered Paths Permitting Equestrian Access



## APPENDIX VII

### Circular and Linear Bridleway Routes Currently being Developed



Map based on Ordnance Survey mapping, with the permission of the Controller of Her Majesty's Stationery Office.